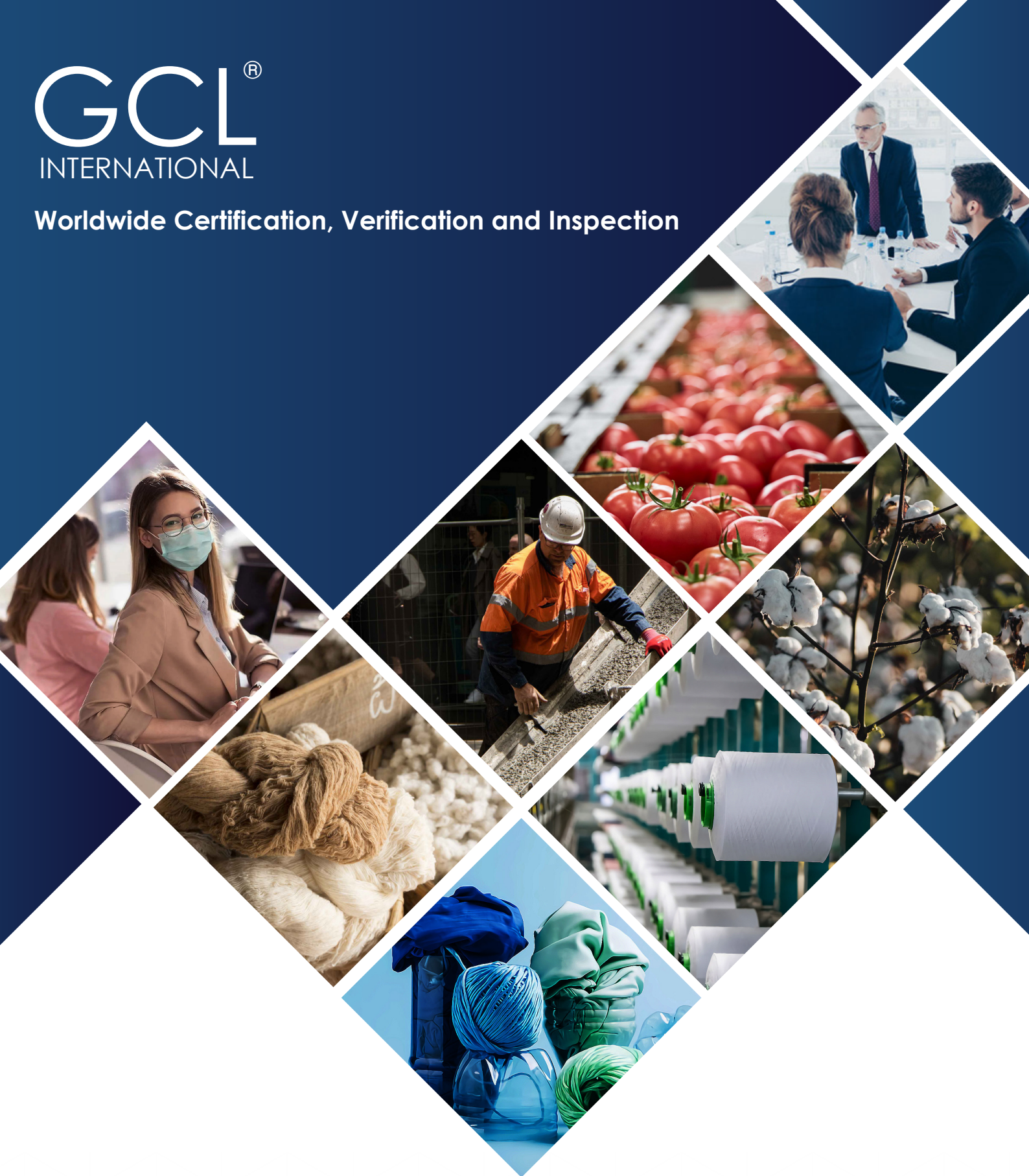


GCL[®]

INTERNATIONAL

Worldwide Certification, Verification and Inspection



**SERVING MORE THAN 50 COUNTRIES ACROSS
5 CONTINENTS SINCE 1995**

Accredited Certification Body for internationally recognised certification, verification and inspection

OUR RESOURCES

With over 600 personnel across the world, we are very equipped to conduct a wide range of audits and inspections.



Technical Expertise

Based at our UK head office, our technical team is focused on accreditation conformance and scheme expansion which allows our international offices to offer an extensive range of certification products.



Local Account Management

Our international offices are responsible for offering a local service to our clients in respect of communications, account management and auditing.



Technology

We are at the forefront when it comes to technology. Our bespoke systems allow us to operate efficiently and effectively across the world. This type of solution allows us to communicate and complete processes in a timely and cost-effective manner.

WHAT WE DO

Management system certification

We provide management system assessment and certification to a range of internationally recognised standards including: ISO 9001, ISO 14001, ISO 22000, ISO 27001, ISO 45001, FSSC 22000.

Product certification

We provide product certification including: Global Organic Textile Standard (GOTS) and Textile Exchange (CCS, OCS, RCS, GRS, RDS, RWS, RMS and RAS).

Inspection

We provide verification of lift installations to the UK Lifts Regulation 2016, Schedules 15, 18 and 19.

Verification

We provide verification services to a range of EU recognised standards including: Higg Index FEM and Social & Labor Convergence Program (SLCP).

Training

We provide a range of management systems, product systems and verification training on a worldwide basis.



WORLDWIDE ACCREDITATION



Accredited Certification Body for Management system for a range of internationally recognised standards



Accredited Inspection Body for inspection



Accredited Body of ANAB for TE & GOTS Programs



Ocean Bound Plastic (OBP)



The Canadian Food Inspection Agency - CFIA



Suppleir Ethical Data Exchange (SEDEX)



Full Member Firm of Association of professional social compliance auditors



GCL International Ltd is accredited for ISO/IEC 17065 EU Compliance



Approved Trainer & Verifier body for Social & Labor Convergence Program (SLCP)



Worldwide Responsible Accredited Production



Food Safety Management Systems



Approved Verifier Body for Higg FEM



Approved Trainer Body for Higg FEM



Accredited According to the EU Regulation 2018/848



Accredited product certification agency



Accredited for ZDHC (Zero Discharge of Hazardous Chemicals)



Member of Association of British Certification Bodies



Assurance Services International (ASI)



Approved Body in the United Kingdom



Member of Federation of Certification Bodies

MANAGEMENT SYSTEM CERTIFICATION

ISO 9001 QUALITY

ISO 9001 is an internationally recognised standard for the quality management systems. The standard is generic in nature and caters for both the manufacturing and service industries.

ISO 27001 INFORMATION SECURITY

ISO 27001 is a standard for the management of information security. It is applicable to all sectors of industry and not confined to just information held on computers. Information may be printed or written on paper, stored electronically.

ISO 22000 FOOD SAFETY

The ISO 22000 family of International Standards addresses food safety management. The consequences of unsafe food can be serious and ISO's food safety management standards help organizations identify and control food.



GOOD MANUFACTURING PRACTICE

GMP certification is granted to manufacturing or service systems of organisations to certify that they engage with good manufacturing practices in their manufacturing or service processes, according to a Standard Code of Practice related to their business.



C-TPAT SECURITY AUDIT

C-TPAT is a joint US government and trade deliberate program to build strong connections that strengthen the worldwide supply chain and border security by moving forward security in respects to transportation of merchandise, cargo, and people amid the course of the commercial shipping handle your business.

ISO 14001 ENVIRONMENTAL

It provides practical tools for companies and organizations looking to identify and control their environmental impact and constantly improve their environmental performance.

ISO 45001 OCCUPATIONAL HEALTH AND SAFETY

ISO 45001 is an internationally recognised standard for occupational health and safety. It exists to help all kinds of organisations put in place demonstrably sound occupational health and safety performance.

ISO 26000 BS ISO 26000 SOCIAL RESPONSIBILITY

ISO 26000 outlines international recommendations for making your organization more socially responsible. It will guide you in building and delivering a long-term social responsibility strategy, whatever the nature of your business.



FOOD SAFETY SYSTEM CERTIFICATION

The Foundation Food Safety System Certification 22000 (FSSC 22000) offers a complete certification Scheme for the auditing and certification of Food Safety Management Systems (FSMS).

SOCIAL COMPLIANCE (GCL-SCS:2009)

The GCL International Social Compliance Scheme (GCL-SCS:2009) is a supply-chain certification scheme. The Scheme ensures a degree of confidence in the supply chain that core social responsibility obligations are being considered and appropriate controls effectively implemented.

OTHER MANAGEMENT SYSTEM CERTIFICATIONS INCLUDE:

BS EN 14065	CODEX GMP	ISO 10002	ISO 3834	BS EN 16636	ISO 17100	ISO 15378
ISO/TS 29001	HACCP	ISO 22716				

PRODUCT CERTIFICATION



OCS (ORGANIC CONTENT STANDARD)

The OCS applies to any non-food product containing 5-100 % organic material. It addresses the flow of product within and between companies, raw material verification, post-harvest processing, manufacturing, packaging and labelling, storage, handling, and shipping through the seller in the last business-to-business transaction.



GRS (GLOBAL RECYCLED STANDARD)

The GRS is an international, voluntary, full product standard that sets out requirements for third-party certification of recycled content, chain of custody, social and environmental practices and chemical restrictions. The goal of the GRS is to increase use of recycled materials in products and reduce/eliminate the harm caused by its production.



GOTS (GLOBAL ORGANIC TEXTILE STANDARD)

The Global Organic Textile Standard (GOTS) is the worldwide leading textile processing standard for organic fibres through covering social, chemical and environmental requirements in every stage of processing units. The aim of this standard is to ensure at least 70% of organic fibre, social, and environmental criteria to provide an assurance to the end of customer.



CANADA ORGANIC REGIME (COR)

Canada Organic Regime is to regulate all parties involved in the certification of organic products to verify all applicable regulatory requirements, standards and guidance documents are being met.



OCEAN BOUND PLASTIC (OBP)

The OBP Certification Program is designed to encourage the removal of Ocean Bound Plastic from the environment by adding value in effectively collecting and treating it before it reaches the ocean.



RCS (RECYCLED CLAIM STANDARD)

The Recycled Claim Standard (RCS) is an international, voluntary standard that sets requirements for third-party certification of Recycled input and chain of custody. The Recycled Claim Standard is intended for use with any product that contains at least 5% Recycled Material. Each stage of production is required to be certified from beginning to end in final business to business transaction.



CONTENT CLAIM STANDARD (CCS)

The aim of the Content Claim Standard (CCS) is to ensure the accuracy of content claims. The CCS accomplishes this goal by verifying the presence and amount of a given raw material in a final product. It provides a strong chain of custody system from the source to the final product and can be certified by GCL International Ltd.



RESPONSIBLE DOWN STANDARD (RDS)

The Responsible Down Standard is an independent, voluntary global standard, which applies to all supply chain sites of waterfowl down and feather material from the hatchery to the seller in the last business-to-business transaction. GCL International offers certification services for the supply chain scope of Responsible Down Standard (RDS).



RESPONSIBLE ANIMAL FIBER (RAF)

GCL offers certification services for the supply chain scope (post farm and post slaughter site) of the Responsible Mohair Standard (RMS), the Responsible Alpaca Standard (RAS) and the Responsible Wool Standard (RWS).

Ø ZDHC

ZERO DISCHARGE OF HAZARDOUS CHEMICALS (ZDHC)

The Roadmap to Zero Programme, by ZDHC, leads the fashion industry to eliminate harmful chemicals from its global supply chain by building the foundation for more sustainable manufacturing to protect workers, consumers and our planet's ecosystems.

SOCIAL PROGRAMS



SMETA (SEDEX MEMBERS ETHICAL TRADE AUDIT) STANDARD – 2 / 4 PILLAR

"GCL International Ltd" is an approved AAC (Affiliate Audit Company) of Sedex. Being granted an account of AAC (Affiliate Audit Company) indicates GCL International's commitment to correctly use SMETA methodology and the Sedex Advance platform under Sedex's supervision.



WRAP – WORLDWIDE RESPONSIBLE ACCREDITED PRODUCTION

GCL International is now a WRAP accredited Monitoring Firm in Pakistan, Turkey, Thailand, India, UAE and Myanmar. GCL only engages WRAP Approved Auditors with APSCA Membership to conduct WRAP audits, as per WRAP requirements. GCL conducts all WRAP activities with the highest degree of honesty, transparency, and commitment to WRAP values and Principles.

FOREST PROGRAMS



THE FOREST STEWARDSHIP COUNCIL® (FSC®)

The Forest Stewardship Council® (FSC®) is an international, non-governmental organisation dedicated to promoting responsible management of the world's forests. FSC's pioneering certification system enables businesses and consumers to choose wood, paper, and other forest products made with materials that support responsible forestry.



PROGRAMME FOR THE ENDORSEMENT OF FOREST CERTIFICATION

PEFC, the Programme for the Endorsement of Forest Certification – PEFC, is a leading global alliance of national forest certification systems. PEFC works to protect the forests by promoting sustainable forest management through certification.



INSPECTION



LIFTS REGULATIONS 2016



The Lifts Regulations 2016 cover various aspects of lift safety and essentially perform the dual function of:

Perform the function of guaranteeing a high level of protection to lift users and maintenance workers all lifts to be sold and installed in the United Kingdom must meet the requirements of the Lifts Regulations. The requirements of the Regulations are addressed to lift installers and components manufacturers, but also have important implications for lift owners and users.

CUSTOMISED & SECOND PARTY AUDITS

GCL is your reliable partner for Customised & Second Party Audits. GCL can help to improve the performance and compliance in your supply chain with its specialist, technical experts, Inspectors and auditors. GCL has experienced resources in customised & Second Party Audits, serving more than 55 countries across 5 continents since 1995.



THE AIM OF THE SECOND PARTY AUDIT

- Strengthening an organization's supply chain.
- Minimize the risk and protect your company reputation.
- Increase efficiencies.
- Improve the quality within your company and in your supply chain.

THE SECTORS OF CUSTOMISED & SECOND PARTY AUDITS

- Recycled and Organic.
- Industrial Manufacturing.
- Consumer Goods & Retail.

VERIFICATION



HIGG FACILITY ENVIRONMENTAL MODULE (HIGG FEM)

The Higg Index is an apparel and footwear industry self-assessment standard for assessing environmental and social sustainability throughout the supply chain. It was developed by the Sustainable Apparel Coalition, a non-profit organization founded by a group of fashion companies.

The Higg facility environmental module (Higg FEM) is a sustainability assessment tool that standardizes how facilities measure and evaluate their environmental performance.

GCL International is an approved verifier body for HIGG FEM.



SOCIAL & LABOR CONVERGENCE

SLCP – The Social and Labor Convergence Program aims to bring together unique perspectives to create an efficient, scalable and sustainable solution for social audits.

This program will help the industry to:

- Eliminate audit fatigue: avoid duplication and reduce the number of social & labor audits.
- Increase the opportunity for greater comparability of social & labor data.

GCL International is an approved verifier body for SLCP.

TRAINING

HIGG FACILITY ENVIRONMENTAL MODULE (HIGG FEM)

Developed by the Sustainable Apparel Coalition, the Higg Index is a suite of tools that enables brands, retailers, and facilities of all sizes at every stage in their sustainability journey. GCL International is an approved Trainer Body for Higg FEM.

SOCIAL & LABOR CONVERGENCE (SLCP)

The Social and Labor Convergence Program aims to bring together unique perspectives to create an efficient, scalable and sustainable solution for social audits. GCL is an approved trainer body for SLCP.

ZERO DISCHARGE OF HAZARDOUS CHEMICALS (ZDHC)

ZDHC aims to restrict the use of hazardous substances at the time of manufacturing textile, leather, and footwear value chain. GCL International is an accredited training provider for ZDHC.

RECYCLED AND ORGANIC STANDARD COURSE

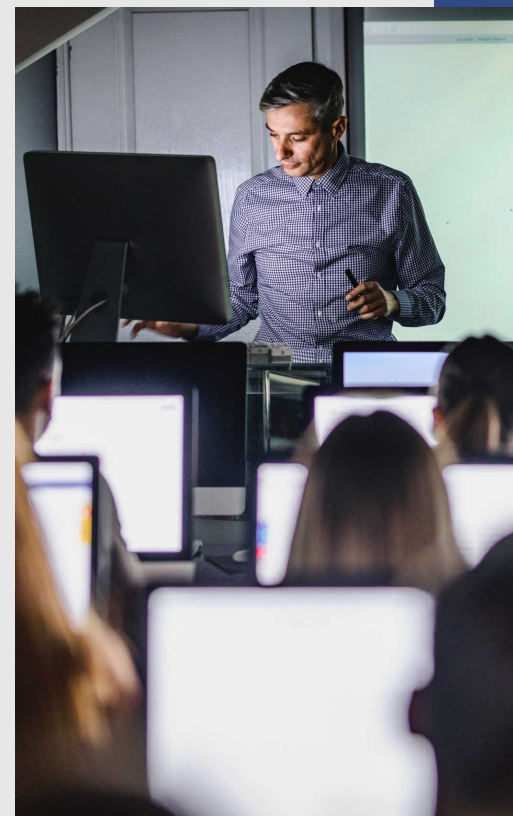
Sustainability in Recycled and Organic (GRS, RCS, OCS and GOTS).

AUDITOR TRAINING COURSES

Management System Auditor (Quality, Environmental and Health & Safety).

MANAGEMENT SYSTEM COURSES

ISO 45001 Awareness and Management System Implementation. ISO 27001 Awareness and Management System Implementation.



OPERATING WORLDWIDE

GCL International is a truly global service provider, with offices and personnel around the world. It is an Accredited Certification Body located in the central business district of London, United Kingdom.



HEADQUARTERS

GCL International Ltd



1, St Mark Street, London, E1 8DA, United Kingdom



www.gcl-intl.com



+44 (0)845 548 9001



info@gcl-intl.com